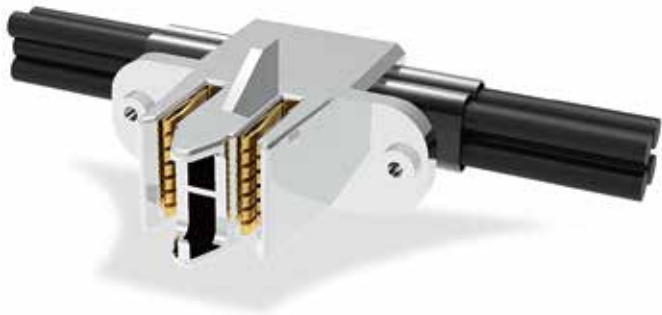


Power Busbar Cable End Connector



OVERVIEW

Luxshare-TECH's power busbar connector, its contacts with very high conductivity pure copper. Silver plating and independent support beams enable the current carrying capacity up to 120A and independent helper springs ensure contact with busbar when busbar insert into it from nonparallel position. The contact beams with “independent” stainless steel helper spring clip ensure proper normal force level and very low, stable contact resistance for each contact beam in product life cycle.

FEATURES & BENEFITS

- Cable end configuration available
- Current carrying capacity up to 120A
- Independent helper springs ensure contact with busbar well

PRODUCT APPLICATIONS

AC/DC pluggable power supplies  
Networking equipment  
Switches  
Servers

INDUSTRY STANDARDS

OCP  
ODCC

TECHNICAL INFORMATION

MATERIAL

Contacts: Copper Alloy  
Clip: Stainless steel  
Finish: Dull Silver Plated Nickel Plated  
Housing&Barrier: High temperature thermoplastic(UL 94V-0)

ELECTRICAL PERFORMANCE

Current: Up to 120A (30°C temperature rise in still air)

ENVIRONMENTAL

Operating temperature : -45°C TO +105°C  
Storage temperature : +15°C TO +35°C  
Relative humidity : 20% to 80%  
Atmospheric pressure : 650mm to 800mm of Hg (86 ~106Kpa)

MECHANICAL PERFORMANCE

Rated Durability Cycles: 100  
Mating Force: 50N MAX  
Unmating Force: 9.8N MIN  
Mating bus-bar: 3.0±0.1mm thickness with Ra0.8 finish

PACKAGING

Tray

Partial PN Table

Product Numbers	Product Description
PPB000-042T-200-0R	Power Busbar Connector 120A